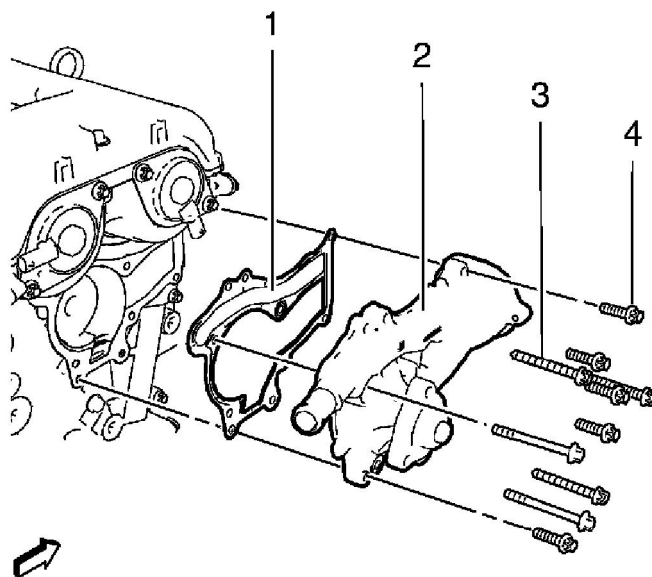


## Water Pump: Service and Repair

### Water Pump Replacement (LDD and LUJ) (1.4L)

#### Removal Procedure

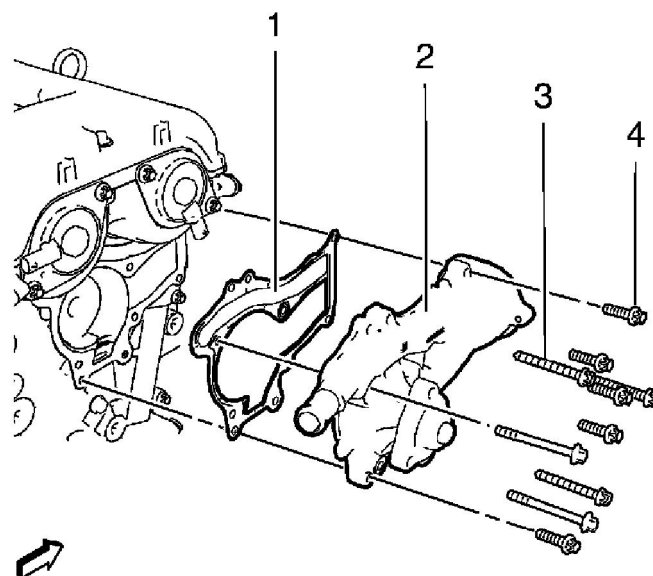
1. Drain the cooling system. Refer to Cooling System Draining and Filling (Static Fill) (See: Cooling System/Service and Repair/Cooling System Draining and Filling (Static Fill))Cooling System Draining and Filling (GE-47716 Fill) (See: Cooling System/Service and Repair/Cooling System Draining and Filling (GE-47716 Fill)).
2. Remove the engine coolant thermostat housing from water pump. Refer to Engine Coolant Thermostat Housing Replacement (1.4L LUH and LUJ) (See: Cooling System/Thermostat Housing/Service and Repair)Engine Coolant Thermostat Housing Replacement (1.6L LDE, LXV, 1.8L 2H0, LUW) (See: Cooling System/Thermostat Housing/Service and Repair).
3. Remove the water pump pulley. Refer to Water Pump Pulley Replacement (LDD, LUH, and LUJ) (See: Drive Pulley/Service and Repair)Water Pump Pulley Replacement (LDE, LXV, 2H0, and LUW) (See: Drive Pulley/Service and Repair).



4. Remove the 5 short water pump bolts (4) and the 5 long water pump bolts (3).
5. Remove the water pump (2).
6. Remove the water pump gasket (1).

#### Installation Procedure

1. Clean the sealing surfaces.



2. Install the water pump (2) and a NEW water pump gasket (1).

**Caution:** Refer to Fastener Caution (See: Service Precautions/Vehicle Damage Warnings/Fastener Caution).

3. Install the 5 short water pump bolts (4) and the 5 long water pump bolts (3) and tighten in a cross sequence to **8 Nm (71 lb in)**.
4. Install the water pump pulley. Refer to Water Pump Pulley Replacement (LDD, LUH, and LUJ) (See: Drive Pulley/Service and Repair)Water Pump Pulley Replacement (LDE, LXV, 2H0, and LUW) (See: Drive Pulley/Service and Repair).
5. Install the engine coolant thermostat housing to water pump. Refer to Engine Coolant Thermostat Housing Replacement (1.4L LUH and LUJ) (See: Cooling System/Thermostat Housing/Service and Repair)Engine Coolant Thermostat Housing Replacement (1.6L LDE, LXV, 1.8L 2H0, LUW) (See: Cooling System/Thermostat Housing/Service and Repair).
6. Fill the cooling system. Refer to Cooling System Draining and Filling (Static Fill) (See: Cooling System/Service and Repair/Cooling System Draining and Filling (Static Fill))Cooling System Draining and Filling (GE-47716 Fill) (See: Cooling System/Service and Repair/Cooling System Draining and Filling (GE-47716 Fill)).